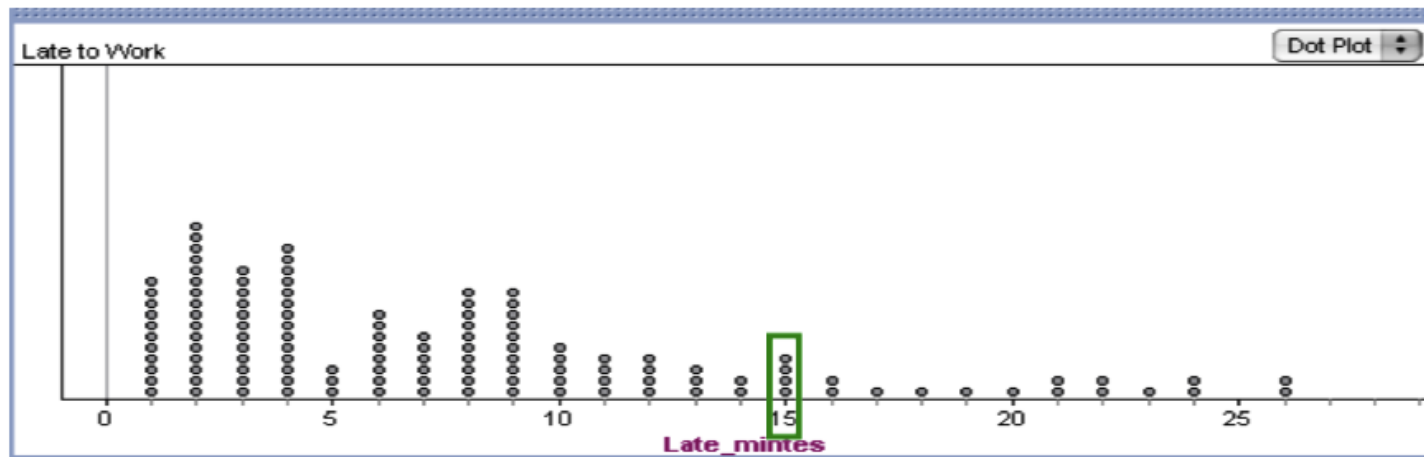


Dot Plots	
Allows us to...	
-	
-	
-	

Dot Plot of Minutes Late to work...



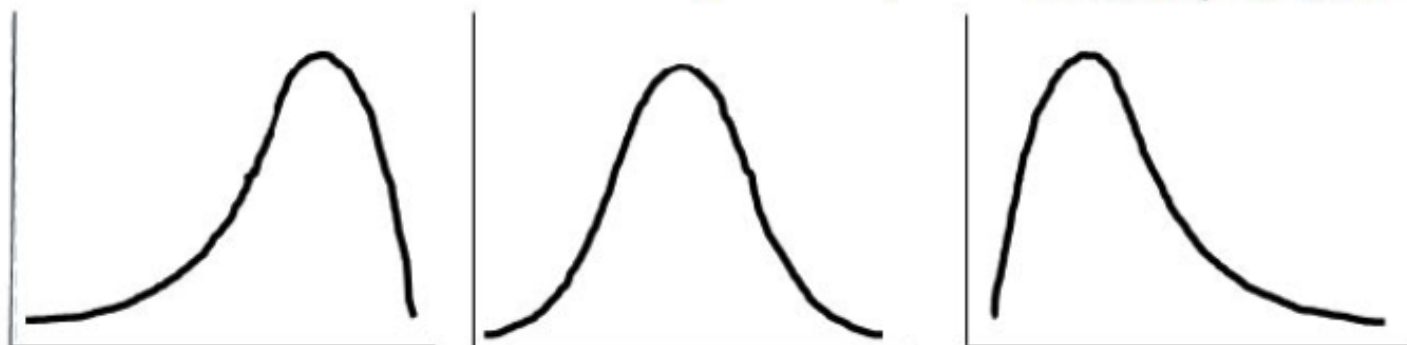
What does this column represent?

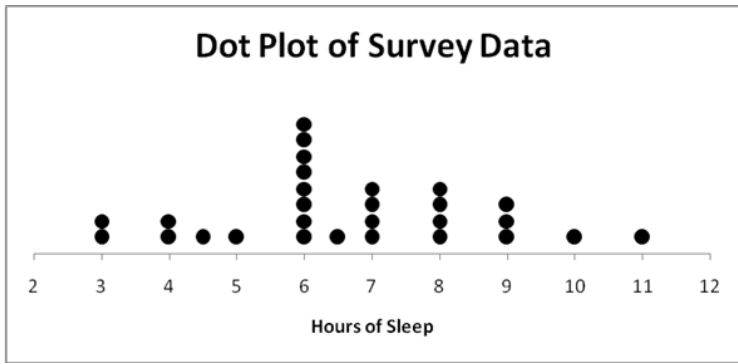
The **range** is defined as... _____

The **mode** of the data is defined as _____

Range of data for minutes late to work	Mode of the late to work data set

Shape – skewed distributions (_____)





What is the range of the data?

What is the mode of the data? Describe what it means.

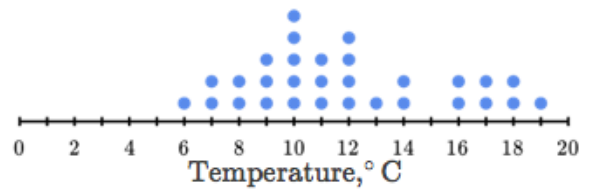
Stem and Leaf Plots

Construct a stem and leaf plot for the number of text Messages sent by members of the junior class at PG.

155	159	144	129	105
145	116	130	114	122
126	112	112	142	126
118	118	108	122	121
109	140	136	119	113
117	119	107	139	128
145	163	143	152	160
148	136	92	146	133
98	104	123	107	96

Text Messages Sent Stem & Leaf Plot

The following dot plot shows the daily high temperature in Kats, Colorado in April. Each dot represents a different day.

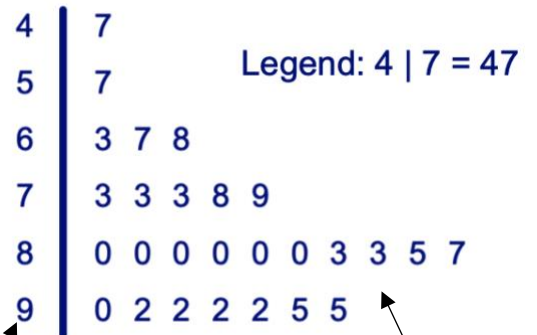


How many days had a temperature of at least 16°C?

How many days had a temperature below at least 11°C?

NOTE:

-



*If you rotate a stem and leaf diagram 90 degrees counterclockwise, a _____ is created

What is the range of the text message data?

What is the median of the data?